

RUPES®



DUST EXTRACTION SYSTEMS

Mobile extraction units

DUST EXTRACTION SYSTEMS FOR 2 OPERATORS

• MK 6000 • MK 6000F •



• HE 200 • HE 200K •



• HTE 300 •



	MK 6000	MK 6000F
Power W	2000	2000
Arm extension, max	6	6
Working angle °	180	180
Air quick couplings for tools nr.	2	2
Air quick coupling with pressure reducer nr.	1	1
Tool electric sockets nr.	2	2
Additional electric sockets nr.	-	1
Bag capacity kg	7,000	7,000
Noise dB(A)	72	72
Max height	4,5	2
Spot light power W	-	500
Automatic start	YES	YES
Vacuum nozzle nr.	2	2

SUPPLIED MK 6000 - MK 6000F:

- Tool-holder:
for MK 6000 (cod. 9.E228)
for MK 6000F (cod. 9.E226);
- 2-way connector (cod. 67.092/C);
- Ø 29 mm, 5 m extraction hose (cod. 9GAT02001/C);
- Paper filter bag (cod. 037.1101/5);
- Air-treatment group (cod. 9.E069).

CONFIGURATION MK 6000:

- KS 260M
- HB 6000
- EP 3M

CONFIGURATION MK 6000F:

- KS 260M
- HF 6000

	HE 200	HE 200K
Technology	Pump side channel	Pump side channel
Power kW	2,2	2,2
Power HP	3	3
Vacuum level max mm H ₂ O	2900	2900
Flow capacity, max m ³ /h	360	360
Filter surface m ²	3	3
Dust container L	26	26
Noise dB(A)	68	68
Ø Connection mm	38/50	38/50
Recommended work-station nr.	2	2
Automatic start-up	YES	YES
Size (hxppl) cm	112x47x90	118x60x97
Weight kg	115	120
Filter cleaning	YES	YES
Mobile	-	YES
Tool electric sockets nr.	-	1
Vacuum nozzle nr.	-	2

SUPPLIED HE 200:

- Disposable polyethylene dust-collection bag (cod. 016.1612) nr. 3;
- Air pressure regulator (cod. 9GP01002).

SUPPLIED HE 200K:

- Disposable polyethylene dust-collection bag (cod. 016.1612) nr. 3;
- Air pressure regulator (cod. 9GP01002);
- Rotating sleeve for Ø 25/29/38/50 mm hose (cod. 040.1108).

	HTE 300
Technology	Pump side channel
Power kW	2,2
Power HP	3
Vacuum level max mm H ₂ O	2900
Flow capacity max m ³ /h	360
Filter surface m ²	3
Dust container L	26
Noise dB(A)	68
Work-station nr.	2
Vacuum nozzle nr.	2
Tool electric sockets nr.	2
Additional electric sockets nr.	2
Air quick couplings for tools nr.	2
Dry air quick coupling nr.	1
Regulated dry air quick coupling nr.	1
Size (hxppl) cm	180x47x90
Multifunctional display	YES
Filter cleaning	YES

SUPPLIED HTE 300:

- Disposable polyethylene dust-collection bag (cod. 016.1612) nr. 3;
- Bracket for wall fixing (cod. 028.1611);
- Compressed-air controlled filter (cod. 9GP01002).



DUST EXTRACTION SYSTEMS FROM 3 TO 4 OPERATORS

• HE 403 • HE 500 •



	HE 403	HE 500
Technology	Multi-stage pump	Pump side channel
Power HP	4	4
Power kW	3	3
Vacuum level max mm H ₂ O	1850	2900
Flow capacity, max m ³ /h	390	390
Size (h x p x l) cm	148x55x63	148x55x63
Filter surface m ²	3	3
Recommended work-stations nr.	3/4	3/4
Automatic start-up	YES	YES
Noise dB(A)	75	68
Ø Connection mm	75	75
Filter cleaning L	35	35
Automatic filter cleaning	YES	YES
Multifunctional Display	-	YES

SUPPLIED HE 403:

- Disposable polyethylene dust-collection bag (cod. 118.500) nr. 3;
- Air pressure regulator (cod. 9GP01002).

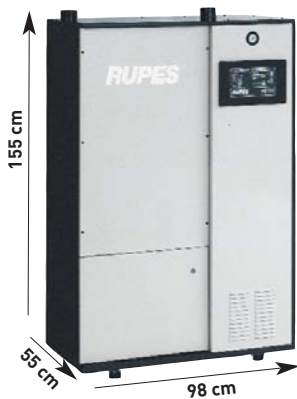
SUPPLIED HE 500:

- Disposable polyethylene dust-collection bag (cod. 118.500) nr. 3;
- Air pressure regulator (cod. 9GP01002).



DUST EXTRACTION SYSTEMS FROM 5 TO 8 OPERATORS

• HE 703 • HE 900 •



	HE 703	HE 900
Technology	Multi-stage up	Pump side channel
Power HP	5,5	7,5
Power kW	4	5,5
Vacuum level max mm H ₂ O	2400	2900
Flow capacity, max m ³ /h	530	550
Size (h x p x l) cm	155x55x98	155x55x98
Filter surface m ²	5,2	5,2
Recommended work-stations nr.	6	6/8
Automatic star-up	YES	YES
Noise dB(A)	78	71
Ø Connection mm	75	75
Dust container L	50	50
Automatic filter cleaning	YES	YES
Multifunctional display	-	YES

SUPPLIED HE 703:

- Disposable polyethylene dust-collection bag (cod. 118.500) nr. 3;
- Air pressure regulator (cod. 9GP01002).

SUPPLIED HE 900:

- Disposable polyethylene dust-collection bag (cod. 118.500) nr. 3;
- Air pressure regulator (cod. 9GP01002).



DUST EXTRACTION SYSTEMS FROM 9 TO 12 OPERATORS

• HE 1403 • HE 1500 •



	HE 1403	HE 1500
Technology	Multi-stage up	Pump side channel
Power HP	11	15
Power kW	8	11
Vacuum level max mm H ₂ O	2400	2900
Flow capacity, max m ³ /h	530+530	550+550
Size (h x p x l) cm	157x55x136	155x55x136
Filter surface m ²	8	8
Recommended work-stations nr.	10	10/12
Automatic start-up	YES	YES
Noise dB(A)	80	74
Ø Connection mm	75	75
Dust container L	50	50
Automatic filter cleaning	YES	YES
Multifunctional display	-	YES

SUPPLIED HE 1403:

- Disposable polyethylene dust-collection bag (cod. 118.500) nr. 3;
- Air pressure regulator (cod. 9GP01002).

SUPPLIED HE 1500:

- Disposable polyethylene dust-collection bag (cod. 118.500) nr. 3;
- Air pressure regulator (cod. 9GP01002).

3

REASONS TO CHOOSE A RUPES VACUUM SYSTEM

1. Cost reduction

The automatic start-up feature integrated in the system and the high reliability of the pumps reduce energy and maintenance costs. This system significantly increases the life of abrasives and tools, thus improving their efficiency if they are maintained clean.

2. Air quality

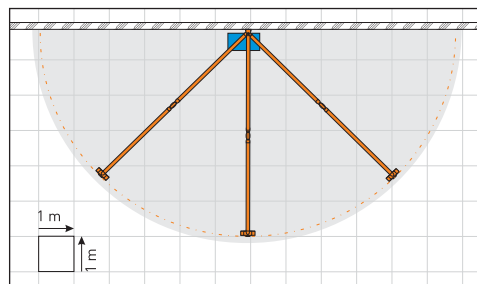
All our vacuum systems are fitted with grade M certified polyester filters and an automatic cleaning system that guarantees maximum efficiency and filtering capacity at all times, while protecting the health of operators.

3. Extremely silent

The sound insulation systems specifically designed and installed inside RUPES turbines maintain the noise level well below the average values and guarantee constant high performances and maximum efficiency.



DUST EXTRACTION SYSTEMS FOR 2 OPERATORS



	Vacuum units
	Terminals holder
	Work area

MK 6000 - MK 6000F Matic system

Easy to install system consisting of vacuum unit and two 1000W single-phase motors. Available with swing arm and EP control unit (MK 6000) or spotlight fitted on swing arm (MK 6000F). This system is ideal for small production units and is designed to automatically start the vacuuming operation both with electric and pneumatic tools. It is possible to simultaneously connect 2 electric or pneumatic tools.

HE 200K Mobile turbine

Mobile vacuum system: it offers the same advantages of conventional vacuum systems and the performances of a turbine. Fitted with a 2.2 kW three-phase pump, 1 vacuum nozzle, a \varnothing 50 mm socket for the connection of vacuum systems and a \varnothing 29 mm socket for the connection of pipes. The system is able to automatically start the vacuuming operation when the pneumatic tools are powered from the quick couplings on the front panel. It can be operated by 2 people when it is necessary can be moved into other locations. The pump with side channel makes this system ideal for prolonged use and heavy-duty applications.

HTE 300 Self extraction tower

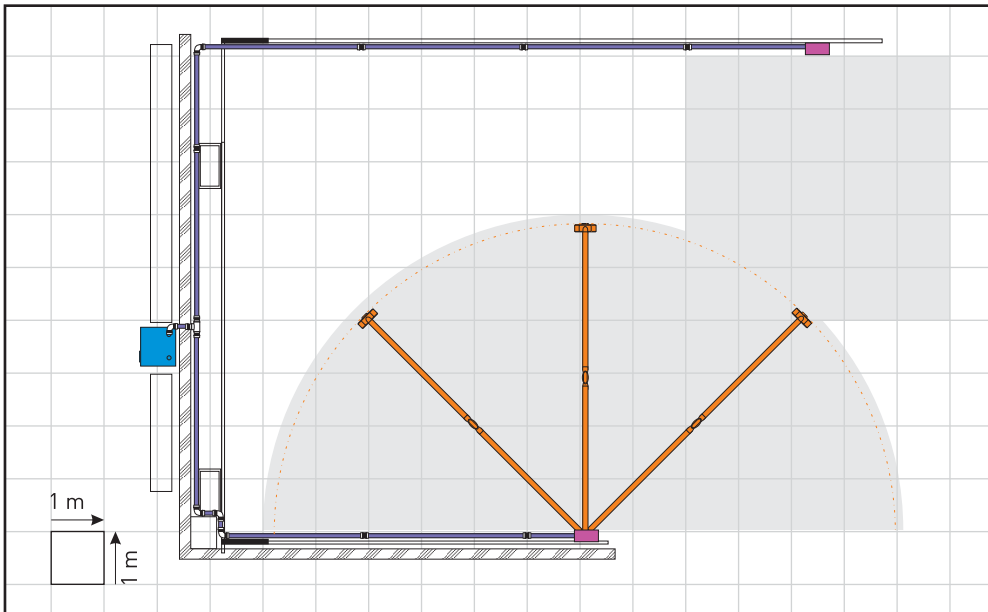
Suction column incorporating a complete system in a single configuration and designed to be operated by two people. It does not require specific installation operations, but only a 5-pole electric three-phase socket and a pneumatic supply. It is ideal to optimize the use of space in working areas and can even be built into the panels. It comes with a 2.2 kW three-phase pump, a cartridge filter, an automatic rotor-jet cleaning system and a collection bin with a capacity of 26 l. The column provides an automatic start-up feature with electric and pneumatic tools that can be practically stored in the two side compartments. Front sockets to meet a variety of needs.

HE 200 Compact Turbine

Small 2.2 kW three-phase turbine with pump and side channel. Thanks to its extremely compact dimensions, it is able to guarantee maximum suction efficiency in small areas. Ideal for small systems with HB or HF arms or PE flush-mounted terminals for **sanding zones or boxes**. Fitted with filter cartridge, automatic rotor-jet cleaning system, dust collection bin and configured to automatically start-up if connected to RUPES terminals.



DUST EXTRACTION SYSTEMS FROM 3 TO 4 OPERATORS



	Vacuum units
	Terminals holder
	Multifunctional terminal
	Work area

TERMINALS

These terminals enable a maximum of 4 operators to connect to small systems. Manual terminals can be used if electric power panels and pneumatic sockets are present. To optimize energy consumption, it is advisable to use automatic terminals that start the turbine as soon as the tool is switched on.

HE 403

Turbine with 3 stage motorized pump (belt drive).
Ideal for a maximum of 4 operators and for distances up to 20/25 m.

HE 500

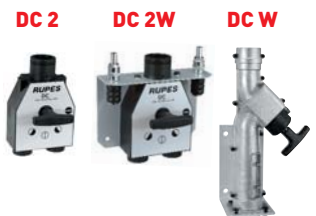
Turbine with pump, side channel and multifunctional display.
Ideal for a maximum of 4 operators and for distances up to 30/35 m.
Optimised for prolonged use or to be used during several shifts.

MANUAL TERMINALS

DCW - DC2 - DC2W: these terminals enable the user to open or close the vacuum connection after the turbine has been directly started by the control panel.

EP3 - PE1 - PE2 - HF6000: multifunctional terminals with sockets for electric and pneumatic tools, rotation switch for turbine start-up and without automatic system.

Manual flow selectors suitable for wall-mounting (DC 2W - DCW) or hanging (DC 2).



Manual terminals for 1 or 2 operators, designed to be flush-mounted.

	PE 1	PE 2
Tool electric sockets nr.	1	2
Additional electric sockets nr.	-	1
Air quick couplings for tools nr.	1	2
Air quick coupling with pressure reducer nr.	1	1
Vacuum nozzle nr.	1	2

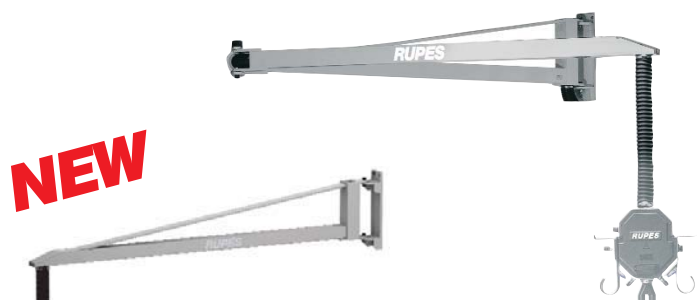
Manual terminal for 2 operators suitable for wall-mounting, hanging or connection to an HB arm.

	EP 3
Tool electric sockets nr.	2
Air quick couplings for tools nr.	2
Air quick coupling with pressure reducer nr.	1
Vacuum nozzle nr.	2



NEW

NEW



Supports for service terminals EP that can be installed at heights ranging from 2.5 to 4.5 m.

	HB 3000	HB 6000
Arm extension, max m	3	6
Working angle °	180	180
Height, max m	4,50	4,50

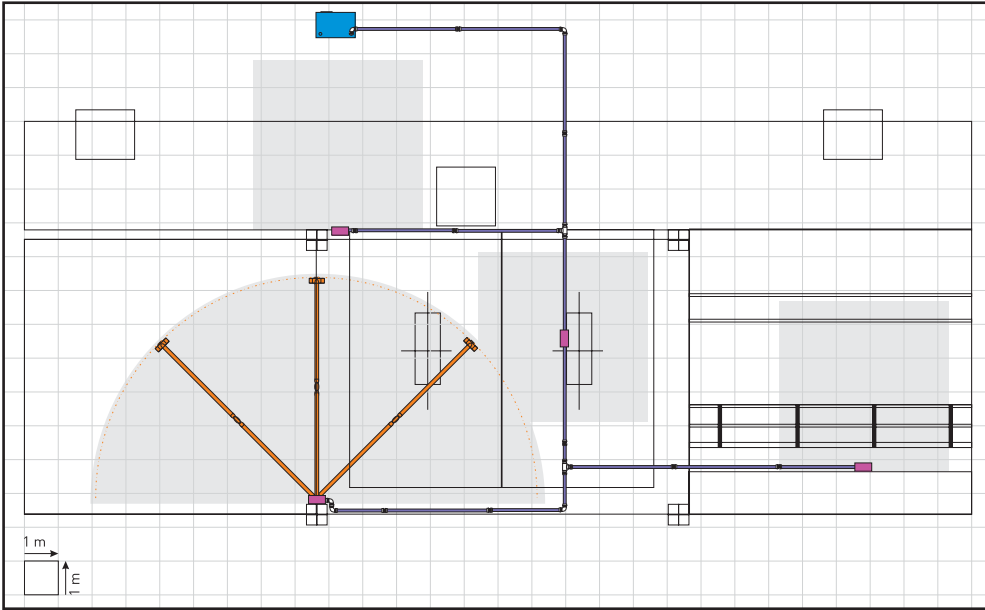


Terminal arms for 2 operators suitable for wall-mounting up to a maximum height of 2 metres.

	HF 3000	HF 6000
Arm extension, max m	3	6
Working angle °	180	180
Height, max m	2,00	2,00
Tool electric sockets nr.	2	2
Additional electric sockets nr.	-	1
Air quick coupling for tools nr.	2	2
Air quick coupling with pressure reducer nr.	1	1
Vacuum nozzle nr.	2	2
Spot light power W	-	500



DUST EXTRACTION SYSTEMS FROM 5 TO 8 OPERATORS



	Vacuum units
	Terminals holder
	Multifunctional terminal
	Work area

TERMINALS

To optimize energy consumption, it is advisable to use automatic or cut-off terminals configured to remotely start the turbine when the tool is switched on.

HE 703

Turbine with 4 stage motorized pump (belt drive).
Ideal for a maximum of 6 operators and for distances up to 30/35 m.

HE 900

Turbine with pump, side channel and multifunctional display.
Ideal for a maximum of 8 operators and for distances up to 50/55 m.
Optimised for prolonged use or to be used during several shifts.

AUTOMATIC TERMINALS

AUTOMATIC terminals enable the turbine to be remotely started when electric or pneumatic tools are switched on. The turbine switches automatically off 1 minute after the last tool connected to the system is switched off.



Terminals with automatic remote start-up feature for 2 operators, suitable for wall-mounting.

	PT 102A	PT202A
Size (hxp) cm	93x22x60	180x22x60
Tool electric sockets nr.	2	2
Air quick couplings for tools nr.	2	2
Air quick coupling with pressure reducer nr.	1	1
Vacuum nozzle nr.	2	2
Automatic start-up	YES	YES



Terminals with automatic remote start-up feature for 1/2 operators, suitable for flush-mounting.

	PE 1A	PE 2A
Tool electric sockets nr.	1	2
Additional electric sockets nr.	-	1
Air quick couplings for tools nr.	1	2
Air quick coupling with pressure reducer nr.	1	1
Vacuum nozzle nr.	1	2
Automatic start-up	YES	YES



Terminal with automatic remote start-up feature for 2 operators, suitable for wall-mounting, hanging or connection to an HB arm.

	EP 3A
Tool electric sockets nr.	2
Air quick couplings for tools nr.	2
Air quick coupling with pressure reducer nr.	1
Vacuum nozzle nr.	2
Automatic start-up	YES



Terminal arms with automatic start-up feature for 2 operators, suitable for wall-mounting at a maximum height of 2 m.

	HF 3000A	HF 6000A
Arm extension, max m	3	6
Working angle °	180	180
Height, max m	2,00	2,00
Tool electric sockets nr.	2	2
Additional electric sockets nr.	-	1
Air quick coupling for tools nr.	2	2
Air quick coupling with pressure reducer nr.	1	1
Vacuum nozzle nr.	2	2
Spot light power W	-	500
Automatic start-up	YES	YES

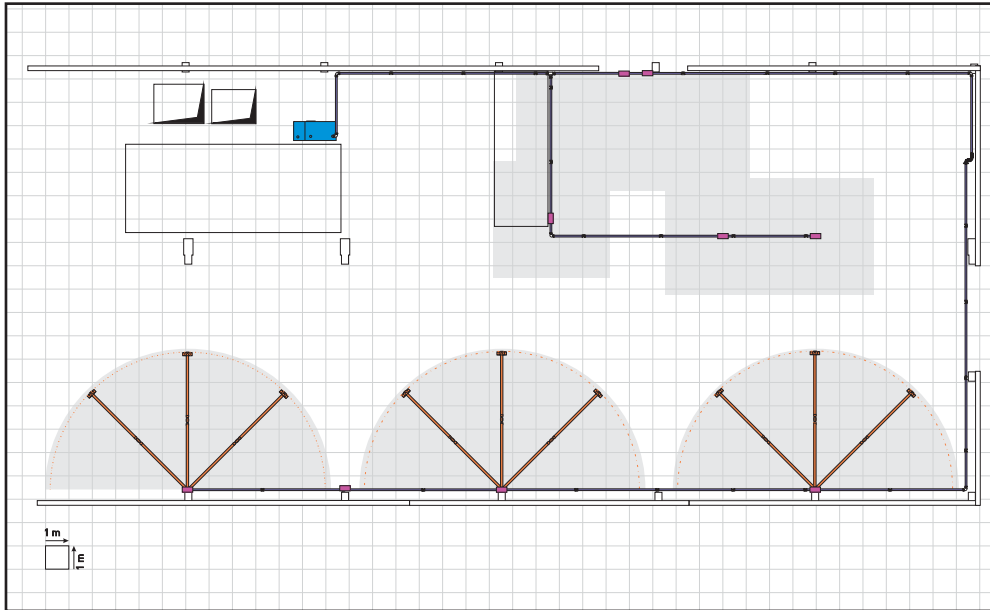


Supports for service terminals EP that can be installed at heights ranging from 2.5 to 4.5 m.

	HB 3000	HB 6000
Arm extension, max m	3	6
Working angle °	180	180
Height, max m	4,50	4,50



DUST EXTRACTION SYSTEMS FROM 9 TO 12 OPERATORS



	Vacuum units
	Terminals holder
	Multifunctional terminal
	Work area

TERMINALS

It is advisable to use cut-off terminals configured to remotely start the turbine when the sander is started in order to optimize the suction and perform this operation only on the sanding stations used.

HE 1403

Turbine with 2 4-stage motorised pump (belt drive).
Ideal for a maximum of 10 operators and for distances over 50 m.

HE 1500

Turbine with 2 pumps, lateral channels and multifunctional display.
Ideal for a maximum of 12 operators and for distances over 50 m.
Optimized for prolonged use and to be used during several shifts.

CUT-OFF TERMINALS

The CUT-OFF system is constituted by a pneumatic valve that regulates the opening and closing of the air flow, in order to optimize the suction operation and ensure it is performed only on the stations to which the tool is connected and operating.

This system enables connect to several service terminals to a single centralised unit and optimise costs and consumptions, without the need of installing more powerful machines.



Terminals with automatic remote start-up feature and suction flow interruption for 2 operators, suitable for wall-mounting.

	PT 102C	PT 202C
Size (h x p x l) cm	93x22x60	180x22x60
Tool electric sockets nr.	2	2
Air quick couplings for tools nr.	2	2
Air quick coupling with pressure reducer nr.	1	1
Vacuum nozzle nr.	2	2
Automatic start	YES	YES
Auto-manua switch	YES	YES



Supports for service terminals EP that can be installed at heights ranging from 2.5 to 4.5 m.

	HB 3000	HB 6000
Arm extension, max m	3	6
Working angle °	180	180
Height, max m	4,50	4,50



Terminals with automatic remote start-up feature and suction flow interruption for 2 operators, suitable for wall-mounting, hanging and connection to an HB arm.

	EP 3C
Tool electric sockets nr.	2
Air quick couplings for tools nr.	2
Air quick coupling with pressure reducer nr.	1
Vacuum nozzle nr.	2
Automatic start-up	YES
Auto-manual switch	YES

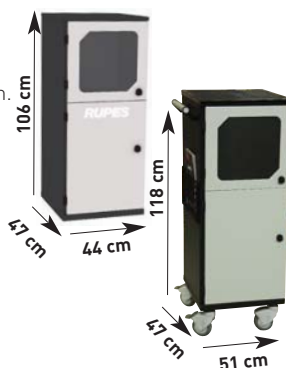
ACCESSORIES



• **PE holder** •

Support for tool and hose. Installation against the wall or built in. Can be installed on all Rupes terminals if needed.

• **HE box** • **KE box** •



Useful and elegant closet to store tools and consumables, designed to match with the HE turbine range. With three wide shelves it's the professional solution to keep the working area organised. The two models available: with 4 anti vibration feet (HE box), or with large pivoting wheel (KE box). KE Tool can be easily connected to HE 200K and become a single and complete working station.

PRE-FILTER UNIT

• **PF 91** •

Vacuum pre-filter suitable to be fitted upstream of the vacuum system, fitted with a large mesh metal filter to withhold the chips, large scraps or shop rejections that could damage the main filter.



	PF 91
Size (h x p x l) cm	148x55x63
Dust container capacity L	90
Working pressure bar	6
Ø Connection mm	75

SUPPLIED:
- Air pressure regulator (cod. 9GP01002).

ATEX PRE-FILTER UNIT

• **PFX 91** •

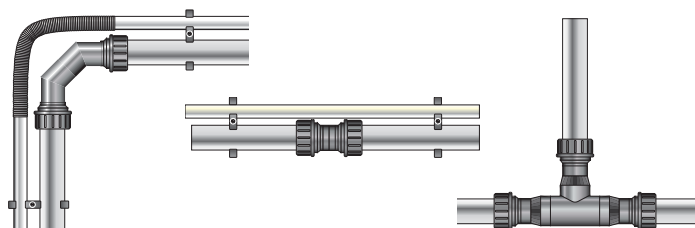
Extraction pre-filter for potentially explosive dust in accordance with the ATEX directive. The unit has an 8 m² anti-static filter with the pneumatic filter cleaning system provided by the Rotorjet System. The pre-filtering stage can be installed in an ATEX classified area (zone 22) and then connected to a traditional extraction turbine installed outside the ATEX zone.



	PFX 91
Size (h x p x l) cm	148x55x63
Dust container capacity L	35
Working pressure bar	6
Ø Connection mm	75
Filter surface m	2.8
Antistatic filter	YES
ATEX approval	YES

SUPPLIED:
- Kit for pneumatic connection to a RUPES turbine (cod. 9GP08092);
- Air pressure regulator (cod. 9GP01002).

FIXED AND MOBILE PIPES



System of fixed and mobile pipes and terminals for centralized equipment. Connection between the extractor and the hoses of tools is made by using a kit of rigid and flexible tubes with quick-fit connectors. When work is complete, the assembly can be quickly dismantled to be removed or reassembled in a different configuration.



REQUEST A CUSTOM QUOTE

RUPES is able to provide detailed offers for all the components needed to install a centralised system: pipes, fittings, couplings, shunt boxes, fixing systems, electric cables, equipment for the pneumatic supply in addition to the assistance of highly qualified personnel to assist customers in the selection of the best solution for specific applications. Contact one of RUPES local agents or your preferred supplier to request a quote.

RUPES SPA

Via Marconi 3,A - Vemezzo (MI) - Italy - Tel.: +39 02.946941 - Fax: +39 02.94941040 - E-mail: info_rupes@rupes.it

www.rupes.com

Due to its constant desire to improve its products, RUPES S.p.A. reserves the right to make any technical or design modification to its products without prior notice. The manufacturer shall not be responsible for printing errors. This document voids and replaces previous ones.